



pec-cá- ta mundi: do-na no-bis pa-cem.

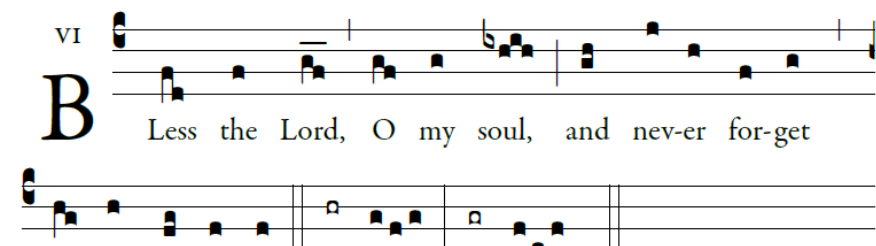
### HOLY COMMUNION

We invite all Catholics who are properly disposed (i.e., in the state of grace and having fasted for one hour before communion) to come forward in the usual way to receive Holy Communion.

All others, including our non-Catholic guests, may remain in their pews and join us in prayer. Alternatively, to participate in the communion procession and receive a blessing, come forward in the line and cross your arms over your chest as you approach the minister. Thank you.

#### COMMUNION ANTIPHON (ALL MASSES) *Benedic, anima mea* CF. PSALM 103:1

Please join in singing the refrain below after the cantor introduction and between psalm verses.



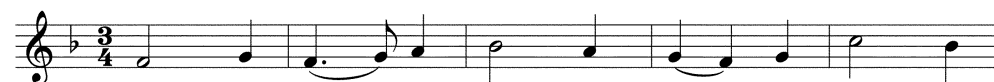
all his ben-e- fits.

Psalm 103; Music: Adam Bartlett, © Illuminare Publications, Inc.

#### CLOSING HYMN (ALL MASSES)

ALLELUIA, SING TO JESUS

HYFRYDOL



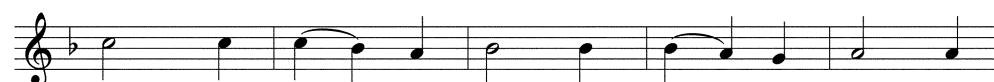
1. Al - le - lu - ia! sing to Je - sus! His the  
2. Al - le - lu - ia! not as or - phans Are we  
3. Al - le - lu - ia! Bread of An - gels, Here on  
4. Al - le - lu - ia! King e - ter - nal, You the



scep - ter, his the throne; Al - le - lu - ia!  
left in sor - row now; Al - le - lu - ia!  
earth our food, our stay! Al - le - lu - ia!  
Lord of lords we own; Al - le - lu - ia!



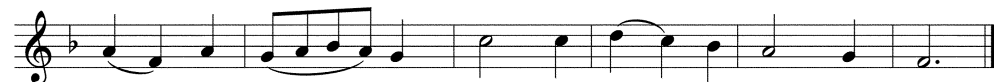
his the tri - umph, His the vic - to - ry a - lone;  
he is near us, Faith be - lieves, nor ques - tions how:  
here the sin - ful Flee to you from day to day:  
born of Mar - y, Earth your foot - stool, heav'n your throne:



Hark! the songs of peace - ful Zi - on Thun - der  
Though the cloud from sight re - ceived him, When the  
In - ter - ces - sor, friend of sin - ners, Earth's re -  
You, with - in the veil, have en - tered, Robed in



like a might - y flood; Je - sus out of  
for - ty days were o'er, Shall our hearts for -  
deem - er, plead for me, Where the songs of  
flesh, our great high priest; Here on earth both



ev - 'ry na - tion Has re - deemed us by his blood.  
get his prom - ise, "I am with you ev - er - more?"  
all the sin - less Sweep a - cross the crys - tal sea.  
priest and vic - tim In the eu - cha - ris - tic feast.

### MUSIC REMINDERS

-The Cathedral is hosting the first-ever Children's Schola Camp (half-days from August 5-9 at the Cathedral, for interested singers in grades 3-8) and Southeastern Sacred Music (August 9-10), a regional Catholic sacred music conference. More information can be found on the Sacred Music subpage of the parish website. These are not "only for experts" conferences, but rather are designed to spread the appeal of our music apostolate to the larger community in the diocese, city, state, and region. Please consider joining us for these important events! Children's Schola Camp participants should register in advance using the Google Form found at [www.stpaulsbhm.org/sacred-music/childrens-schola](http://www.stpaulsbhm.org/sacred-music/childrens-schola).

-In late January, the Cathedral signed a contract with the Noack Organ Company for their Opus 164, which will be installed in Summer 2021. Our new pipe organ will be named the Anna Catharine Grace Memorial Pipe Organ in honor of the instrument's major donor. While her generous gift made initiation of the project possible, a large sum must still be raised for the total project cost. Please visit the Cathedral website and see the "Anna Catharine Grace Memorial Organ" subpage (under the 'Sacred Music' heading) for more information.

-DID YOU KNOW...that you can donate to the Organ Fund electronically? Just use this link (<https://stpaulsbhm.churchgiving.com/organ>) and share with your friends! Every dollar...and cent...helps! Thank you for your generosity!

-Please consider a commitment of time or treasure to our music apostolate. New singers are always needed in our choral ensembles (please see the website descriptions for more details), as are donors for the Music Fund. We average slightly over \$1000/year in donations for programming, while fees for choral groups in concert are well over \$3000 per concert. Please help ensure the future of our music apostolate with your gifts—a sign of faith in God and His Church!

#### COPYRIGHTS

All music used with permission. Onelicense #A702187

## THE CATHEDRAL OF SAINT PAUL

BIRMINGHAM, ALABAMA

MOST REVEREND ROBERT J. BAKER, S.T.D., BISHOP

VERY REVEREND BRYAN W. JERABEK, J.C.L., PASTOR & RECTOR

### THE SEVENTEENTH SUNDAY IN ORDINARY TIME

JULY 28, 2019



Welcome to the Cathedral. The order of Mass is in the first section of *Sunday's Word*, found in the pew rack, starting on page 3. The readings of the day are found starting on page 122.

#### ENTRANCE HYMN (ALL MASSES)

PRAISE TO THE LORD, THE ALMIGHTY

LOBE DEN HERREN



1 Praise to the Lord, the Al - migh - ty, the King of cre -  
2 Praise to the Lord, a - bove all things so won - drou - sly  
3 Praise to the Lord, who shall pros - per our work and de -  
4 Praise to the Lord! O let all that is in me a -



a - tion! O my soul, praise him, for he is your  
reig - ning; shel - tering you un - der his wings, and so  
fend us; sure - ly his good - ness and mer - cy shall  
dore him! All that has life and breath, come now with



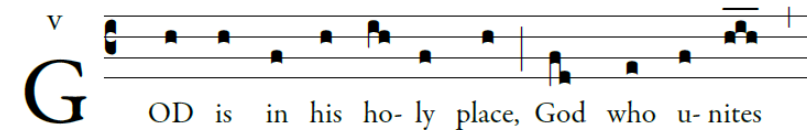
health and sal - va - tion! Come, all who hear; now to his  
gent - ly sus - tain - ing! Have you not seen all that is  
dai - ly at - tend us. Pon - der a - new what the Al -  
prai - ses be - fore him. Let the "A - men!" sound from his



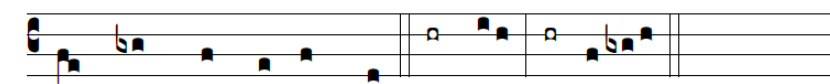
tem - ple draw near, join me in glad a - do - ra - tion.  
need - ful has been met by his gra - ious or - dain - ing?  
migh - ty can do, who with his love will be - friend you.  
pe - ople a - gain; glad - ly with praise we a - dore him.

#### ENTRANCE ANTIPHON (11:00AM) *Deus in loco sancto suo* CF. PSALM 68:6,7

Please join in the refrain below after the cantor introduction and between verses.



G OD is in his ho - ly place, God who u - nites



those who dwell in his house.

Music: Adam Bartlett, © 2015; Illuminare Publications

KYRIE (ALL MASSES)

MASS XI "ORBIS FACTOR"

Please repeat the Kyrie and Christe phrases after the cantor; then join in the final Kyrie.

I  
**K** Y-ri- e \* e- lé- i-son. Chri-ste  
 e- lé- i-son. Ký-ri- e e- lé- i-son.  
 Ký- ri- e \* e- lé- i-son.

GLORIA (5:00PM, MISSA SIMPLEX; 8:30 & 11:00AM, MASS XI [BELOW])

II  
**G** Ló-ri- a in excélsis De- o. Et in terra pax  
 homí-ni-bus bonæ vo-luntá- tis. Laudámus te. Be-ne-  
 dí- cimus te. Ado-rámus te. Glo-ri-fi-cámus te.  
 Grá-ti- as á-gimus ti-bi propter magnam gló-ri- am tu- am.  
 Dómi- ne De- us, Rex cæ- lé- stis, De- us Pa- ter omní- pot-  
 ens. Dómi- ne Fi- li u- ni- gé- ni- te Je- su Chri- ste.  
 Dómi- ne De- us, Agnus De- i, Fí- li- us Pa- tris. Qui  
 tol- lis peccá- ta mun- di, mi- se- ré- re no- bis. Qui tol- lis  
 peccá- ta mun- di, sú- sci- pe depreca- ti- ó- nem nostram. Qui

se- des ad dèx- te- ram Pa- tris, mi- se- ré- re no- bis. Quóni- am  
 tu so- lus san- ctus. Tu so- lus Dómi- nus. Tu so- lus Altís-  
 simus, Je- su Chri- ste. Cum Sancto Spí- ri- tu, in gló-  
 ri- a De- i Pa- tris. A- men.

RESPONSORIAL PSALM

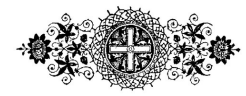
PSALM 138:1-2, 2-3, 6-7, 7-8

Lord, on the day I called for help, you an- swered me.  
 Music: Richard Proulx, Joseph Gelineau, SJ © GIA Publications, Inc.; Text: The Grail

ALLELUIA

VIII  
**A** L- le- lú- ia.

You have received a Spirit of adoption, through which we cry, Abba, Father.



OFFERTORY (8:30AM AND 11:00AM)

O JESUS, JOY OF LOVING HEARTS

WAREHAM

O Je- sus, joy of lov- ing hearts, The fount of  
 We taste in you our liv- ing bread, And long to  
 For you our rest- less spir- its yearn Wher- e'er— our  
 O Je- sus, ev- er with us stay; Make all— our  
 life— and our— true light, We seek— the peace your  
 feast— up- on— you still; We drink of— you, the  
 chang- ing lot— is cast; Glad, when your pres- ence  
 mo- ments calm and bright; O chase the night of

love im- parts, And stand re- joic- ing in— your sight.  
 foun- tain- head, Our thirst- ing souls to quench and fill.  
 we dis- cern, Blest, when our faith can hold— you fast.  
 sin a- way, Shed o'er— the world your ho- ly light.

SANCTUS (5:00PM, MISSA SIMPLEX; 8:30 & 11:00AM, MASS XI [BELOW])

II  
**S** Anctus, \* San- ctus, Sanctus Dó- mi- nus De- us  
 Sá- ba- oth. Ple- ni sunt cæ- li et ter- ra gló- ri- a  
 tu- a. Ho- sánna in ex- cèl- sis. Be- ne- díctus qui  
 ve- nit in nó- mi- ne Dó- mi- ni. Ho- sánna  
 in ex- cèl- sis.

MYSTERIUM FIDEI

We pro- claim your Death, O Lord, and pro- fess your Res- ur- rec- tion  
 un- til you come— a- gain.

AGNUS DEI (5:00PM, MISSA SIMPLEX; 8:30 & 11:00AM, MASS XI [BELOW])

I  
**A** - gnus De- i, \* qui tol- lis pec- cá- ta mun- di: mi-  
 se- ré- re no- bis. Agnus De- i, \* qui tol- lis peccá- ta  
 mun- di: mi- se- ré- re no- bis. Agnus De- i, \* qui tol- lis